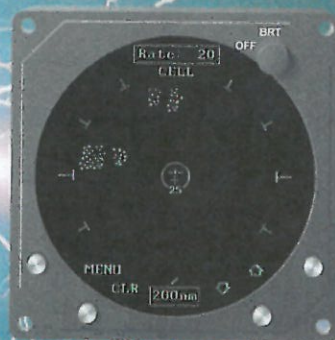




## **Cessna 172R N9520D Avionics Manuals**

**BF-GOODRICH (BF-G) WX950  
STORMSCOPE**

Pilot's Guide  
for the  
**Stormscope®**  
Series II Weather Mapping System  
Model WX-950



communications

## Important Notices

- This data is provided at no charge, or at cost, to the public and is considered publicly available, No License Required (NLR) as defined in the Export Administration Regulations (EAR) Part 734.7-11.
- This guide provides general information about the operation of the WX-950. This guide does not cover all possible interconnections with all possible types of aircraft systems. Refer to your aircraft flight manual and flight manual supplement for information specific to your aircraft. If there is conflicting information between those manuals and this pilot's guide, your aircraft flight manual and flight manual supplement take precedence over this pilot's guide.

## Safety Summary

These warnings and cautions appear later in this guide and are repeated here for emphasis:

### WARNING

page 4-1

*Never use your Stormscope system to attempt to penetrate a thunderstorm. The FAA Advisory Circular, Subject: Thunderstorms, and the Airman's Information Manual (AIM) recommend that you "avoid by at least 20 miles any thunderstorm identified as severe or giving an intense radar echo."*

### CAUTION

page 4-1

*There are several atmospheric phenomena other than nearby thunderstorms which can cause isolated discharge points in the strike display mode. Clusters of two or more discharge points in the strike display mode however do indicate thunderstorm activity when they reappear after clearing the screen. Avoid the clusters and you'll avoid the thunderstorms. In the cell display mode, even a single discharge point may represent thunderstorm activity and should be avoided.*



Pilot's Guide  
for the  
**Stormscope®**  
Series II Weather Mapping System

**Model WX-950**



Methods and apparatus disclosed and described herein have been developed solely on company funds of L-3 Communications Avionics Systems, Inc. No government or other contractual support or relationship whatsoever has existed which in any way affects or mitigates proprietary rights of L-3 Communications Avionics Systems, Inc. in these developments. Methods and apparatus disclosed herein may be subject to U.S. Patents existing or applied for. L-3 Communications Avionics Systems, Inc. reserves the right to add, improve, modify, or withdraw functions, design modifications, or products at any time without notice.

© Copyright 1996, 2004  
L-3 Communications Avionics Systems, Inc.

*Stormscope®* is a registered trademark of L-3 Communications Avionics Systems, Inc.  
The white L3 in a circle design logo is a trademark of L-3 Communications Corporation.

Designed and manufactured in the United States of America by



L-3 Communications Avionics Systems, Inc.  
5353 52nd Street, S.E.  
Grand Rapids, MI 49512 USA  
(800)253-9525 or (616)949-6600  
Fax (616)285-4224  
www.L-3com.com/as

## *Stormscope®* System Advantages

### Welcome

L-3 Communications Avionics Systems, Inc. one of the world's most experienced companies in airborne thunderstorm avoidance instruments, is pleased to welcome you to the family of tens of thousands of pilots who are enjoying the benefits of safer flight with a *Stormscope®* weather mapping system.

### The Original

Don't be fooled by *Stormscope* system look-alikes. There is only one *Stormscope* system, and only one company that makes the *Stormscope* line of weather mapping systems. The *Stormscope* system, the original, most accurate weather mapping system is manufactured by L-3 Avionics Systems.

### Fly with Greater Confidence

You now own one of the leading instruments in the world for airborne detection and mapping of thunderstorms. Unlike any other product, your new *Stormscope* system will enable you to make better informed thunderstorm avoidance decisions so you can fly more safely and with greater confidence than ever before.

### Convenient Features

The advanced, patented technology in your new *Stormscope* system was developed over many years and is so unique, so revolutionary, it surpasses all others. Here are some of its features:

- Maps electrical discharges
- Operates in 25, 50, 100, and 200 nmi ranges
- Provides a 120° forward view and a 360° view of the surrounding airspace
- Uses a high resolution 3-inch ATI CRT display/processor

## Revision Highlights

This revision B of the pilot's guide makes the following changes:

- Changes occurrences of "Goodrich Avionics Systems" to "L-3 Communications Avionics Systems, Inc." or just "L-3 Avionics Systems" and makes related company contact information changes. (On March 28, 2003, Goodrich Corporation sold its Avionics Systems division to L-3 Communications Corporation.)
- Eliminates the Warranty Information chapter. Warranty information is now provided on a separate warranty card.
- Increases typeface size and adds more white space.
- Adds export statement to inside front cover.



# Table of Contents

Section	Page
List of Illustrations .....	vii
List of Tables .....	viii
Chapter 1, System Description .....	1-1
General Description .....	1-1
Display/Processor .....	1-2
Antenna .....	1-2
Functional Description .....	1-2
Cell Display Mode .....	1-2
Strike Display Mode .....	1-4
Discharge Rate .....	1-4
Features .....	1-4
Chapter 2, Storm Mapping Principles ..	2-1
Anatomy of a Thunderstorm .....	2-1
Stages of a Thunderstorm .....	2-3
Cumulus Stage .....	2-3
Mature Stage .....	2-3
Dissipating Stage .....	2-3
Storm Mapping Technology .....	2-4
The WX-950 & Weather Radar .....	2-4
Automatic Updating .....	2-4
Chapter 3, Operation .....	3-1
Introduction .....	3-1
Controls & Screen Elements .....	3-1
Turn On the WX-950 .....	3-4
Adjust the Screen Brightness .....	3-5
Switch to the MENU Screen .....	3-6
Scroll Through the Menu Items .....	3-6
Switch to a Weather View .....	3-6
Method A .....	3-7
Method B .....	3-7
Switch Between Weather Views .....	3-8
Select the Range .....	3-8

# Table of Contents (continued)

Section	Page
Clear All Discharge Points .....	3-9
Switch Between WX Display Modes .....	3-10
Run the Operator-Initiated Self Test .....	3-11
Toggle Heading Stabilization On and Off .....	3-12
Turn Off the WX-950 .....	3-13
Continuous Self Test .....	3-13
Error Messages .....	3-13
Non-Fatal Faults .....	3-13
Recoverable Faults .....	3-16
Non-Recoverable Faults .....	3-17
Fatal Faults .....	3-18
Chapter 4, Weather Display Interpretation .	4-1
Introduction .....	4-1
Radial Spread .....	4-2
Typical Patterns .....	4-3
Three Clusters within the 200 nmi Range Ring .....	4-3
Two Clusters within the 200 nmi Range Ring .....	4-5
Mapping Headings Past Thunderstorms .....	4-6
Range Set at 200 nmi .....	4-6
Aircraft Progresses 100 nmi .....	4-7
Range Changes to 100 nmi .....	4-8
Aircraft Turns to Avoid Thunderstorms .....	4-9
Special Patterns .....	4-10
Randomly Scattered Discharge Points .....	4-10
Cluster & Splattering Within 25 nmi .....	4-10
Discharge Points Off Aircraft's Nose .....	4-12
Line of Discharge Points While Taxiing .....	4-13
Developing Cluster Within the 25 nmi Range Ring .....	4-14
Chapter 5, Specifications .....	5-1

## List of Illustrations

Figure	Title	Page
1-1	WX-950 Major Components .....	1-1
1-2	WX-950 Functional Diagram .....	1-3
1-3	WX-950 Weather Views .....	1-3
2-1	Electrical Discharges in Thunderstorms .....	2-1
2-2	Discharge Rate a Function of Wind Shear .....	2-2
3-1	Controls & Screen Elements .....	3-1
3-2	Self Test in Progress .....	3-4
3-3	All Tests Passed .....	3-5
3-4	Weather View at 200 nmi Range .....	3-5
3-5	MENU Screen with Weather View Highlighted .....	3-6
3-6	Switching Between Weather Views .....	3-8
3-7	MENU Screen with WX Display Highlighted .....	3-10
3-8	MENU Screen with Self Test Highlighted .....	3-11
3-9	MENU Screen with HDG Stabilize Highlighted .....	3-12
3-10	MENU Screen with HDG Stabilize N/A .....	3-12
3-11	Error Message for a Recoverable Weather Fault .....	3-14
3-12	Weather Mapping Inhibited Screen .....	3-16
3-13	Error Message for a Heading-Related Fault .....	3-17
3-14	Weather View with a Heading Flag .....	3-17
3-15	Error Message for a Fatal Fault .....	3-18
4-1	Airspace Diagram .....	4-1
4-2	Three Clusters Within 200 nmi .....	4-3
4-3	Range Changed to 100 nmi .....	4-4
4-4	Two Clusters Within 200 nmi .....	4-5
4-5	Range Set at 200 nmi .....	4-6
4-6	Aircraft Progresses 100 nmi .....	4-7
4-7	Range Changes to 100 nmi .....	4-8
4-8	Aircraft Turns To Avoid Thunderstorms .....	4-9
4-9	Randomly Scattered Discharge Points .....	4-10
4-10	Cluster & Splattering Within 25 nmi .....	4-11
4-11	Discharge Points Off the Aircraft's Nose .....	4-12
4-12	Line of Discharge Points While Taxiing .....	4-13
4-13	Developing Cluster Within 25 nmi .....	4-14

## List of Tables

Table	Title	Page
3-1	Error Messages .....	3-14
5-1	WX-950 System Specifications .....	5-1



# Chapter 1

## System Description

### General Description

The *Stormscope*® Series II Weather Mapping System, model WX-950 (figure 1-1) detects electrical discharges from thunderstorms up to 200 nautical miles away and displays the thunderstorm locations relative to your aircraft.

The WX-950 is a passive system so there is no transmitter and no harmful transmissions. The system operates as well on the ground as in the air, thereby giving the pilot important planning information before takeoff.

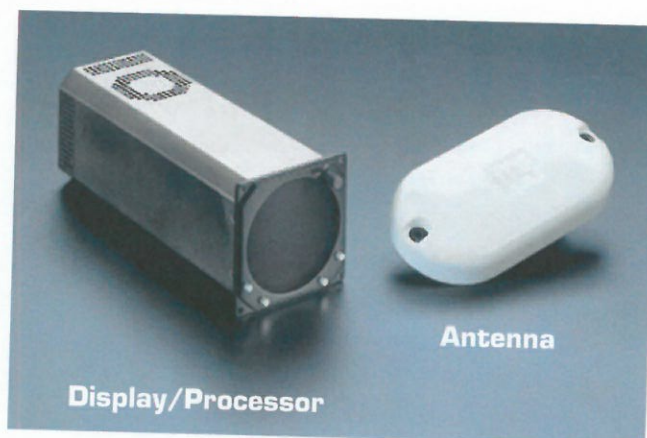


Figure 1-1. WX-950 Major Components

### Display/Processor

The display/processor mounts into any standard 3-inch ATI cutout in the aircraft instrument panel. The display/processor houses two main functional components: a high resolution, raster scan CRT display with a dedicated graphics controller, and two powerful processors on which the *Stormscope* software runs. The processors are reprogrammable to allow for future enhancements to the lightning detection software.

### Antenna

This combined crossed-loop and sense antenna is sealed in an aerodynamic flat-pack and mounted on the outside of the aircraft where it detects electrical discharges associated with thunderstorms. The WX-950 uses its patented sense channel technology to correlate the electric and magnetic signatures of lightning strikes. The antenna is also designed to help filter out pulsed noise from sources other than atmospheric electrical discharges.

### Functional Description

Figure 1-2 and the following paragraphs describe how the major components of the WX-950 connect to each other and to other aircraft systems.

The antenna detects the electric and magnetic fields generated by intra-cloud, inter-cloud, or cloud-to-ground electrical discharges that occur within a 200 nmi radius of the aircraft and sends the resulting "discharge signals" to the display/processor. The display/processor digitizes, analyzes, and converts the discharge signals into range and bearing data then stores the data in memory. The WX-950 then displays discharges as storm cells or strikes depending on the display mode selected (figure 1-3).

### Cell Display Mode

In the cell display mode, the WX-950 plots a "+" symbol (discharge point) on the display when it detects associated discharges within the selected range and view. The processor plots another "+" close to the first for each additional

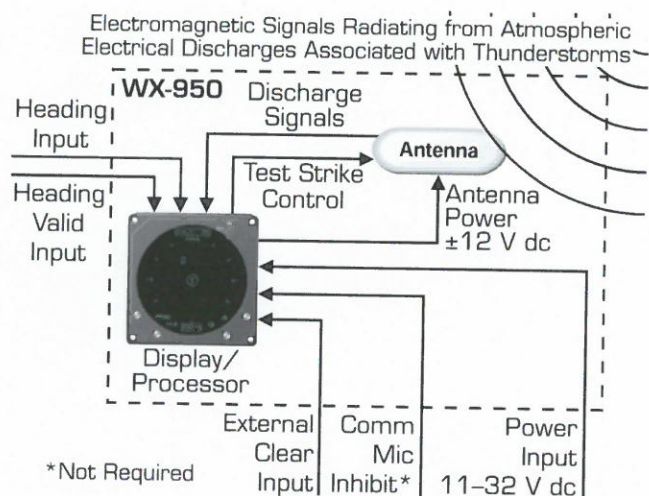


Figure 1-2. WX-950 Functional Diagram



Figure 1-3. WX-950 Weather Views

discharge determined to be associated with the group. The processor does not plot a "+" for any discharge not associated with a group unless it's detected within a 25 nmi radius of the aircraft. The effect of this clustering algorithm is to display the location of storm cells instead of individual discharges. The cell display mode is most useful during periods of heavy electrical discharge activity. Using the cell

display mode during these periods allows the pilot to quickly see where the cells are without having to sift through and analyze a screen full of discharge points.

### Strike Display Mode

In the strike display mode, the WX-950 immediately plots an "x" symbol (discharge point) on the display for each individual discharge it detects within the selected range and view. The strike display mode plots discharge points on the display in relation to where the discharges are actually detected instead of plotting them close to an associated group of discharge points as is done in the cell display mode. The strike display mode is most useful during periods of light electrical activity because it may plot discharges associated with a building thunderstorm sooner than the cell display mode would.

### Discharge Rate

Pilots may use the discharge rate (approximate number of electrical discharges per minute in the current range and view) to determine if storm cells are building or decaying.

### Features

- Four operator-selectable weather ranges:
  - 25 nmi
  - 50 nmi
  - 100 nmi
  - 200 nmi
- Two operator-selectable weather views (figure 1-3):
  - 360° view of surrounding airspace
  - 120° forward view
- Three types of self test:
  - Power-up self test
  - Continuous self test
  - Operator initiated self test



- Heading stabilization – automatically repositions discharge points on the display relative to the latest aircraft heading when connected to a compatible heading system
- Local and remote clear – allows operator to clear displayed discharge points using a button on the front of the WX-950 or from a remotely-mounted “clear screen” button (not supplied)
- Discharge rate indicator – displays estimated average discharge rate per minute for current range and view
- Mic inhibit – inhibits thunderstorm processing when the communications transmitter is keyed to prevent the processing of corrupted data (some aircraft need to use this feature, others don’t)
- Integrity monitor – animated indicator on the display confirms that the WX-950 is working. This feature is most useful during periods of no electrical activity.
- Power/brightness control – allows operator to adjust the CRT brightness and to turn the WX-950 on and off
- Four buttons – these function keys perform various functions depending on what mode the WX-950 is in and what screen is being displayed. This variability allows for flexibility and future expansion.
- Cell and strike display modes – allows you to view all individual discharges (strikes) or groups of discharges (cells)

## Chapter 2

# Storm Mapping Principles

### Anatomy of a Thunderstorm

The WX-950 is intended to help pilots avoid the dangers associated with thunderstorms (convective wind shear, lightning, icing, tornadoes, etc.). The WX-950 locates thunderstorms by detecting the electrical discharges that thunderstorms always generate. Figure 2-1 shows how thunderstorms create electrical discharges and radiate electromagnetic signals.

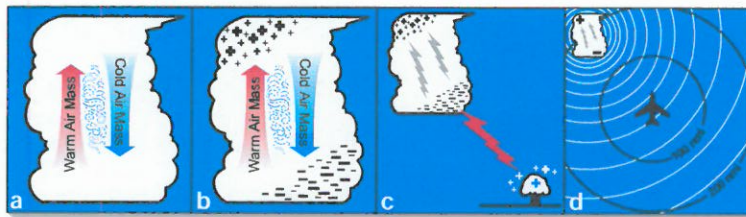


Figure 2-1. Electrical Discharges in Thunderstorms

- a. The convective flow of air currents (warm air going up and cold air going down) leads to friction between the opposing air currents and wind shear in the space between the opposing air currents. The closer together the opposing air currents are, the greater the shearing force of the air currents.

- b. The friction between the opposing air currents causes electrical charges in the area to separate. As positive (+) and negative (–) electrical charges are separated, they accumulate in masses of similar charges (positive charges near the top of the cloud and negative charges near the bottom).
- c. Electrical discharges occur as the accumulated masses of separated positive and negative charges attempt to rejoin. These discharges continue to occur repetitively as long as the convective wind shear persists. A few of the discharges are visible as lightning, but most electrical discharges occur within a cloud or between clouds and are hidden by those clouds. Only a small percentage of discharges occurs between the clouds and the ground. Cloud to ground lightning occurs when the negatively charged lower part of a cloud induces a positive charge on an object on the ground. The immense charge separation finally breaks down the insulating air and a discharge occurs dumping negative charge from the cloud onto the object and the surrounding ground.
- d. All electrical discharges radiate electromagnetic signals in all directions close to the speed of light. The electromagnetic signals have unique characteristics and varying rates of recurrence and signal strength.

Figure 2-2 shows that the rate of electrical discharges detected in an area is directly related to the amount of convec-

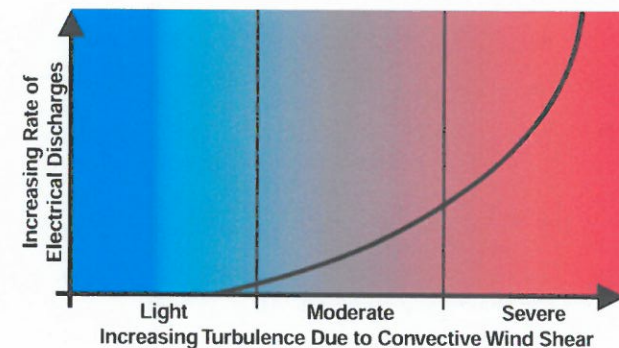


Figure 2-2. Discharge Rate a Function of Wind Shear



tive wind shear turbulence present. In fact, as convective wind shear increases, the rate of electrical discharges increases at an increasing rate. This relationship means that if you find the electrical discharges, you've found the wind shear.

## Stages of a Thunderstorm

All thunderstorms begin as cumulus clouds, build to an intense mature stage, and finally dissipate. Each of these stages in the life of a thunderstorm present a different set of dangers to aircraft. The WX-950 maps all stages in the life of a thunderstorm so that you won't be caught unaware by a thunderstorm that can build, mature, and dissipate in as little as 20 minutes.

### Cumulus Stage

The cumulus or beginning stage of a thunderstorm is usually precipitation free. In this stage, the risks to an aircraft and its occupants include strong vertical winds, severe turbulence, icing, and convective wind shear.

### Mature Stage

In the mature and most intense stage of a thunderstorm, the water droplets within the cloud collide and combine to form rain and hail and, at cooler temperatures, sleet and snow. This stage poses many hazards to aircraft including heavy precipitation, high winds, convective wind shear, severe turbulence, downbursts, hail, icing, tornadoes, and lightning.

### Dissipating Stage

In the dissipating stage, the updraft weakens and at the same time, the convective wind shear and other hazardous conditions begin to subside. There may be high rainfall rates in this stage, but the severe dangers are diminishing.

## Storm Mapping Technology

### The WX-950 & Weather Radar

The storm mapping technology used in the WX-950 is fundamentally different than the technology used in weather radar. Weather radar operates by transmitting UHF radio waves in the direction of interest and then receiving echoes from water droplets, whereas the WX-950 operates by receiving signals already present in the atmosphere due to electrical discharges. The WX-950 analyzes the unique characteristics of these signals, their signal strength, and their varying rates of recurrence to determine the location and intensity of the thunderstorms that generated the discharges. The WX-950 can receive radiated electromagnetic signals from electrical discharges up to 200 nmi away.

One disadvantage of weather radar is that the cumulus stage of a thunderstorm (usually precipitation free) is unlikely to appear on weather radar; however, it generally does contain electrical discharges which *will* appear on your WX-950 display as a light but increasing cluster of discharge points.

Another disadvantage of weather radar is that due to attenuation, it may not see the "storm behind the storm" or may understate its intensity. Your WX-950 is not subject to attenuation. With the WX-950, electrical discharges are mapped throughout the storm area. The size of the cluster of discharge points on your WX-950 indicates the size of the storm area. The speed with which the discharge points appear indicates the intensity of the storm regardless of the size of the cluster. The more intense the storm, the faster the discharge points reappear.

### Automatic Updating

The WX-950 receives and processes electrical discharge information continuously and updates the screen as needed, which may be many times every second. Even though the electromagnetic signals from electrical discharges are of very short duration, the WX-950 stores the resulting discharge points in memory and displays each point for a maximum of 3 minutes before it is erased from the screen and from memory.

In the 360° view, the WX-950 can store and display 512 discharge points within the selected range. In the 120° view, the WX-950 can store and display 256 discharge points within the selected range. When the number of electrical discharges exceeds the maximum displayable capacity in a given view within a 3-minute interval, the oldest discharge point in memory and on the screen in that view is erased and replaced with the newest discharge point. This process continues to replace old discharge points with new ones to make sure that discharge points on the screen represent the most recent electrical discharges. In a typical thunderstorm, all the points on the screen may be replaced with new points every 1 to 2 minutes. In a severe thunderstorm, the display may be completely updated every 30 to 60 seconds.



## Chapter 3 Operation

### Introduction

This chapter describes the WX-950's controls and screen elements, and lists the operating instructions and error messages.

### Controls & Screen Elements

Figure 3-1 and the following paragraphs describe the WX-950's controls and major screen elements.

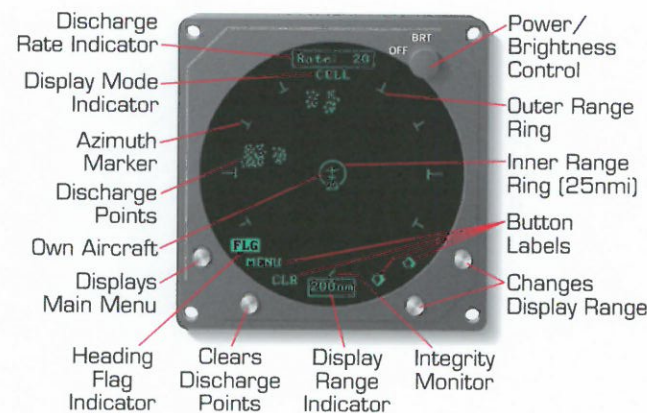


Figure 3-1. Controls & Screen Elements



#### Power/Brightness Control (OFF/BRT)

Rotating this knob clockwise turns on the WX-950 and increases the brightness of the display. Rotating



**Outer Range Ring** The outer range ring identifies the outer boundary of the current range. In the 360° view, the outer range ring is made up of 8 arcs spaced 30° apart along a circle centered on the aircraft symbol. In the 120° view, the outer range ring is made up of 2 arcs each spaced 30° on either side of the aircraft heading along a circle centered on the aircraft symbol. If the range is set to 25 nmi in either view, the outer range ring is a solid ring instead of arcs. The numerical value of the radius of the outer range ring is displayed in the range indicator at the bottom of the screen.



**Inner Range Ring (25 nmi)** This solid ring is displayed on every range of both weather views to keep you informed of any thunderstorm activity within a 25 nmi radius of your aircraft.



**Button Labels** These labels indicate the function of the adjacent buttons. The labels change from screen to screen.



**Buttons** The four buttons protruding from the bottom half of the bezel are momentary contact switches. The WX-950 assigns them different functions depending on which screen and options are currently active.



**Integrity Monitor** This bar rotates to indicate that the WX-950 is working. This indicator is most useful during periods of no lightning activity.



**Display Range Indicator** This indicator displays the numerical value of the current range displayed on the screen. This value corresponds to the distance from the aircraft to

the outer range ring. The possibilities are 25, 50, 100, and 200 nmi.

**FLG**

**Heading Flag Indicator** The heading flag indicator appears if the WX-950 detects a heading invalid flag from the aircraft navigational system while heading stabilization is enabled on the WX-950. Upon receiving a heading flag, the WX-950 clears the display and begins operating in a “fixed card” manner without heading stabilization.



**Own Aircraft Symbol** This symbol indicates the location and heading of your aircraft relative to the thunderstorm activity.



**Discharge Points** The position of these + symbols in cell display mode and x symbols in strike display mode indicates the azimuth and range of the detected electrical discharge activity relative to your aircraft. Discharge points sometimes overlap to form clusters. A large cluster indicates that the thunderstorm covers a large area. A dense cluster indicates an intense thunderstorm. The size of the discharge points increases as the selected range decreases in order to enhance the storm clustering effect on the shorter ranges. The latest discharge points (none older than 3 minutes) are stored in memory and displayed even if you switch ranges or views and then switch back to the original range or view.



**Azimuth Markers** The azimuth markers help to quantify the angular location of electrical discharges relative to the aircraft. In the 360° view, 8 short radial markers are spaced 30° apart around the outside of the outer range ring. In the 120° view, 4 azimuth markers radiate out from the aircraft symbol at 30° and 60° on either side of the aircraft heading.

**CELL****STRIKE**

**Display Mode Indicator** This indicator reports the current wx (weather) display mode (CELL or STRIKE). Weather is defined as electrical activity. The indicator is present on both the 360° and the 120° views.

**Rate: 20**

**Discharge Rate Indicator** This indicator displays an estimate of the average number of electrical discharges detected per minute in the selected range and view. The indicator is updated every 5 seconds. The range of the indicator is 0–999.

## Turn On the WX-950

1. Rotate the OFF/BRT knob clockwise about 180°.

The switch clicks and the WX-950 begins the power-up self test and displays the SELF-TEST screen (figure 3-2) with the message SYSTEM TEST IN PROGRESS. The power-up self test takes about 25 seconds to ensure that all major functions are operating properly. Functions tested include antenna reception, memory, and microprocessor functions.



Figure 3-2. System Test in Progress



If the WX-950 detects no faults, the SELF-TEST screen (figure 3-3) displays the message ALL TESTS PASSED. After a few seconds, the display switches to the 360° weather view screen (figure 3-4) set at the 200 nmi range. The WX Display mode setting and the HDG Stabilize setting will be in the same states as they were in when the WX-950 was last used.



Figure 3-3. All Tests Passed



Figure 3-4. Weather View at 200 nmi Range

If the WX-950 detects a fault, an error message is displayed. Refer to page 3-13 for more information on error messages.

**NOTE**

*The WX-950 may complete its power-up self test before the CRT comes on. In this case, it is possible that the first screen you see will be the 360° weather view screen or an error message resulting from the self test.*

## Adjust the Screen Brightness

1. Rotate the OFF/BRT knob clockwise to increase the brightness of the display or counterclockwise to decrease the brightness of the display.

## Switch to the MENU Screen

1. From either of the two weather views (360° or 120°) press the MENU button. (See figure 3-1.)

The display switches to the MENU screen (figure 3-5) with the first menu item, Weather View, highlighted.



Figure 3-5. MENU Screen with Weather View Highlighted

## Scroll Through the Menu Items

1. Switch to the MENU screen (figure 3-5).
2. Press the down arrow button to move the highlighting bar down the menu.  
When the highlighting bar reaches the last menu item, pressing the down arrow button again will move the highlighting bar up to the first item in the list.
3. Press the up arrow button to move the highlighting bar up the menu.

When the highlighting bar reaches the first menu item, pressing the up arrow button again will move the highlighting bar down to the last item in the list.

## Switch to a Weather View

There are two ways to get to a weather view from the MENU screen. These are described below as method A and method B.

### Method A

1. On the MENU screen, scroll through the menu items until the menu item Weather View is highlighted. (See figure 3-5.)
2. Press the 360° button to switch to the 360° weather view screen or press the 120° button to go to the 120° weather view screen.

The position of the 360° and 120° button labels depends on the last weather view screen displayed. If the 360° weather view screen was displayed last, the upper left button will be labeled 120° and the lower left button will be labeled 360°. If the 120° weather view screen was displayed last, the upper left button will be labeled 360° and the lower left button will be labeled 120°.

### Method B

- a. With the MENU screen displayed and the Weather View menu item *not* highlighted, press the upper left button (labeled 360° or 120°) to switch to the weather view screen that was displayed last.

The display will switch to the weather view screen that was last displayed as indicated by the button label.

## Switch Between Weather Views

The sequence of physical buttons to push to switch between the two weather views is the same whether you start from the 360° view or the 120° view; only the button labels are different. (See figure 3-6.) In short, to switch from one weather view to the other, press the upper left button twice.

1. Press the MENU button (the upper left button).

The display switches to the MENU screen.

2. Press the upper left button (now labeled 120° or 360°) again.

The display switches to the other weather view. Note that when switching between weather views, the range remains constant.

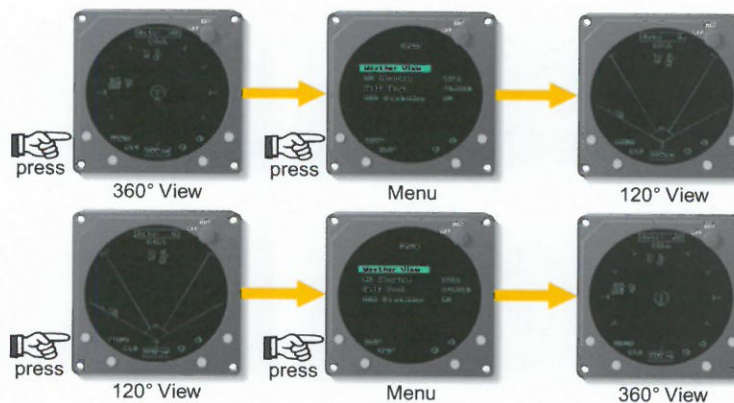


Figure 3-6. Switching Between Weather Views

## Select the Range

1. Switch to one of the two weather views (360° or 120°).
2. Press the up arrow button repeatedly to step up through the 25, 50, 100, and 200 nmi ranges.
3. Press the down arrow button repeatedly to step down through the 200, 100, 50, and 25 nmi ranges.

With each press of the up or down arrow button, the screen changes to display the electrical discharge activity detected within the new range. The range indicator also



changes to display the numerical value of the new range (25, 50, 100, or 200 nmi). This new range corresponds to the distance from the aircraft to the outer range ring on the screen.

Pressing the up arrow button in the 200 nmi range changes the range to 25 nmi. Likewise, pressing the down arrow button in the 25 nmi range changes the range to 200 nmi.

The WX-950 stores electrical discharge information for all ranges simultaneously to provide you with an instant, up-to-date display of electrical discharge activity when you select a new range.

As you move from one range to the next, a solid ring always indicates the 25 nmi range to advise you of your close proximity to thunderstorms. You may also notice that the discharge points are progressively larger on the shorter ranges and smaller on the longer ranges. This effect makes it easier to spot clusters of discharge points in any range.

## Clear All Discharge Points

1. Switch to one of the two weather views (360° or 120°).
2. Press the CLR button.

All discharge points are erased from the screen and from memory. The WX-950 continues to plot any new discharge points on the cleared screen.

Clearing the discharge points periodically while you're monitoring thunderstorms is a good way to determine if the storm is building or dissipating. Discharge points in a building storm reappear faster and in larger numbers after you press the CLR button. Discharge points in a dissipating storm reappear slower and in smaller numbers after you press the CLR button.

If you have the standard heading stabilization feature connected and turned on (on the MENU screen), you do not have to press the CLR button after every heading change to ensure that the discharge points are positioned correctly with respect to the current heading.

## Switch Between WX Display Modes

The WX Display menu item selection determines how the WX-950 displays electrical activity on both the 360° and 120° weather views. (WX stands for weather and is defined as electrical activity.)

1. Switch to the MENU screen.
2. Scroll through the menu items until the WX Display menu item is highlighted (figure 3-7).

The currently selected weather display mode is listed to the right of the highlighted menu item.



Figure 3-7. MENU Screen with WX Display Highlighted

3. Press the button labeled CELL or STRIKE to toggle between the cell and strike display modes. (Chapter 1 describes the display modes.)

The currently selected weather display mode listed to the right of the highlighted menu item toggles between CELL and STRIKE with each press of the button labeled CELL or STRIKE. The mode selected here remains in effect until you change it, even if the unit is turned off and back on. To see the results of selecting a new weather display mode, switch to a weather view. The current weather display mode (CELL or STRIKE) is displayed under the discharge rate indicator box at the top of the screen. In the cell display mode, the discharge points are +’s. In the strike display mode, the discharge points are X’s.



## Run the Operator-Initiated Self Test

1. Switch to the MENU screen.
2. Scroll through the menu items until the Self Test menu item is highlighted (figure 3-8).

The current self test status is listed to the right of the highlighted menu item.



Figure 3-8. MENU Screen with Self Test Highlighted

3. Press the TEST button to run the operator-initiated self test.

The WX-950 switches to the SELF-TEST screen (figure 3-2) and begins the self test. Functions tested include micro-processor functions and memory. The SELF TEST screen displays the message SYSTEM TEST IN PROGRESS for the duration of the test (between 5 and 25 seconds).

If the WX-950 detects no faults, the SELF-TEST screen (figure 3-3) displays the message ALL TESTS PASSED. After a few seconds, the display switches back to the MENU screen and PASSED is displayed to the right of the highlighted menu item.

If the WX-950 detects a fault, an error message is displayed. Refer to the section on error messages later in this chapter for more information on error messages. Once you've pressed any button to acknowledge the error message, the display switches back to the MENU screen and FAULT is displayed to the right of the highlighted menu item.

## Toggle Heading Stabilization On and Off

The heading stabilization feature automatically adjusts the position of the discharge points on the display when your aircraft changes heading. Normally, if the WX-950 was installed to use the heading stabilization feature, you should never have to turn heading stabilization off; however, a situation may occur in which the heading input appears to be invalid but no heading flag is displayed. In this case, you should turn heading stabilization off until the heading input is corrected. If you are flying with heading stabilization turned off, or do not have a compatible heading system, you can press the CLR button after each heading change to display new discharge points in the proper location relative to the heading of the aircraft symbol on the display.

1. Switch to the MENU screen.
2. Scroll through the menu items until the HDG Stabilize menu item is highlighted (figure 3-9).

The current state of the heading stabilization feature is listed to the right of the highlighted menu item. An "N/A" displayed here means that heading stabilization is not available due to your particular installation configuration. (See figure 3-10.)



Figure 3-9. MENU Screen with HDG Stabilize Highlighted



Figure 3-10. MENU Screen with HDG Stabilize N/A

3. Press the button labeled ON or OFF to toggle the heading stabilization feature on and off.



The current state of the heading stabilization feature (listed to the right of the highlighted menu item) toggles between ON and OFF with each press of the button labeled ON or OFF. If N/A is displayed, the button has no label and pressing it has no effect. The state selected here remains in effect until you change it, even if the unit is turned off and back on.

## Turn Off the WX-950

1. Rotate the OFF/BRT knob counterclockwise until it turns off.

Power turns off to the display, processor, and antenna, and all discharge points are erased from memory.

## Continuous Self Test

In addition to the power-up self test and the operator-initiated self test, the WX-950 also performs a continuous self test. Items tested include antenna reception, microprocessor functions, memory, heading inputs, and microprocessor temperature. The WX-950 performs the continuous self test several times each minute.

## Error Messages

The WX-950 detects most common faults and displays error messages indicating the nature of the faults and which functions may be inoperative. These error messages enable your authorized *Stormscope*® dealer or L-3 Avionics Systems factory service personnel to quickly diagnose and correct the fault. Figure 3-11 shows an error message. Table 3-1 lists all the possible error messages, the probable causes, and the recommended actions.

### Non-Fatal Faults

If a non-fatal fault occurs, all functions not directly affected by the fault continue to operate and the message “Press any key to continue” appears. Pressing any button returns you to the screen that was displayed before the error message appeared. (You should still see your authorized *Stormscope*® dealer as soon as possible to correct the fault.)

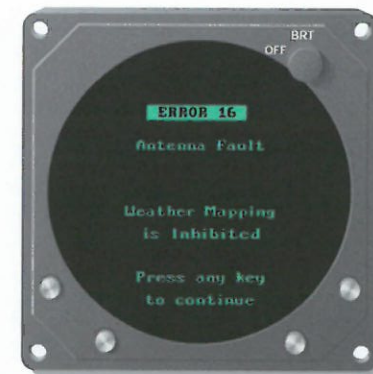


Figure 3-11. Error Message for a Recoverable Weather Fault

Table 3-1. Error Messages

Error Message	Fault Source	Type*	Recommended Action
Error 01 Processor Fault	Main processor	F	Turn off the unit and see your dealer for service.
Errors 02 and 03 Processor Fault	Video controller	F	Turn off the unit and see your dealer for service.
Error 04 Processor Fault	Video memory	F	Turn off the unit and see your dealer for service.
Errors 05 thru 08 Processor Fault	Main processor memory	F	Turn off the unit and see your dealer for service.
Errors 09 thru 13 Processor Fault	DSP memory	F	Turn off the unit and see your dealer for service.
Errors 14 and 15 Processor Fault	DSP	F	Turn off the unit and see your dealer for service.
Error 16 Antenna Fault	Antenna is not able to receive or forward the necessary thunderstorm data or it could be a faulty connection	NF/R	Press any button to continue without weather mapping functions. See your dealer for service.
Error 17 Processor Fault	No test strikes**	NF/R	Press any button to continue without weather mapping functions. See your dealer for service if this error occurs frequently.

\*F=Fatal, NF=Non-Fatal, R=Recoverable, NR=Non-Recoverable (Description follows table.)

\*\*Flying within 5 nmi of a certain Government antenna near Annapolis Maryland can also cause this error message to appear. The recommended action in this case is to do nothing.



Table 3-1. Error Messages (Continued)

Error Message	Fault Source	Type*	Recommended Action
Error 18 Processor Fault	Invalid test strike	NF/R	Press any button to continue without weather mapping functions. See your dealer for service if this error occurs frequently.
Error 19 Processor Fault	Main Processor data overload	NF/R	Press any button to continue without weather mapping functions. See your dealer for service if this error occurs frequently.
Error 20 Configuration Changed	Antenna jumper configuration changed since last time power was applied to the system	NF/R	Press the "TOP" or "BOTTOM" button to respond to the prompt "Select Antenna Location." If jumper does not agree with user selection, "Configuration Fault" is displayed and continued operation is not possible.
Error 21 Processor Fault	Main processor	F	Turn off the unit and see your dealer for service.
Error 22 Invalid Synchro Signals	Invalid XYZ input (gyro may still be spinning up)	NF/R	Press any button to continue without heading stabilization. See your dealer for service.
Error 23 Invalid Synchro Ref	No 400 Hz reference	NF/R	Press any button to continue without heading stabilization. See your dealer for service.
Error 24 Mic Key Stuck	Mic key (inhibit line) stuck. The microphone key has been depressed for more than 1 minute	NF/R	Check your microphone key to correct the problem. If not correctable, press any button to continue without weather mapping functions and see your dealer for service.
Error 25 SW Ver Error	Main processor	F	Turn off the unit and see your dealer for service.
Errors 26 thru 34 Processor Fault	Main processor	F	Turn off the unit and see your dealer for service.
Errors 35 and 36 Processor Fault	DSP or main processor	NF/R	Press any button to continue without weather mapping functions. See your dealer for service.

\*F=Fatal, NF=Non-Fatal, R=Recoverable, NR=Non-Recoverable (Description follows table.)

Table 3-1. Error Messages (Continued)

Error Message	Fault Source	Type*	Recommended Action
Error 38 Invalid Configuration	Invalid heading configuration. Stepper & XYZ selected.	NF/NR	Press any button to continue without heading stabilization. See your dealer for service.
Error 39 High Temperature	Processor high temperature	NF/R	Press any button to continue. Perform the self test from the MENU screen to see if the fault condition is still present. See your dealer for service.
Error 40 Processor Fault	Main processor	NF/R	Press any button to continue. See your dealer for service if this error occurs frequently.
Error 41 Processor Fault	DSP or main processor	F	Turn off the unit and see your dealer for service.
Error 42 Processor Fault	Main processor	F	Turn off the unit and see your dealer for service.

\*F=Fatal, NF=Non-Fatal, R=Recoverable, NR=Non-Recoverable (Description follows table.)

### Recoverable Faults

A recoverable fault is one that allows the affected functions to automatically resume proper operation after the fault goes away. The associated error message disappears within 10 seconds after the fault goes away. The following are two examples of recoverable faults.

### Weather-Mapping-Inhibited Faults

After you clear a weather fault error message (figure 3-11), the message "Weather Mapping Fault Present; Please Stand By" appears continuously on the lower half of both weather views as long as the fault condition exists. (See figure 3-12.) Any existing or new discharge points continue to be displayed along



Figure 3-12. Weather Mapping Inhibited Screen



with the message, but due to the fault condition, the points may not be valid.

### Heading-Related Faults

After you clear a heading fault error message (figure 3-13), “FLG” appears continuously in reverse video above the MENU button label on both weather views as long as the fault condition exists. (See figure 3-14.)



Figure 3-13. Error Message for a Heading-Related Fault



Figure 3-14. Weather View with a Heading Flag

### Non-Recoverable Faults

A non-recoverable fault allows you to press a button and continue operation, but without the function that is affected by the fault. The affected function does not resume proper

operation until the system is turned off and repaired. In the case of error 38, invalid configuration, you can press a button to clear the associated error message, but heading stabilization will not be available until the heading configuration jumpers are corrected.

### Fatal Faults

If a fatal fault occurs, all functions cease to operate and the message “Continued operation is not possible” appears. (See figure 3-15.) In this case, turn off the WX-950 and see your authorized *Stormscope*® dealer for service.



Figure 3-15. Error Message for a Fatal Fault

# Chapter 4

## Weather Display Interpretation

**WARNING** Never use your Stormscope system to attempt to penetrate a thunderstorm. The FAA Advisory Circular, Subject: Thunderstorms, and the Airman's Information Manual (AIM) recommend that you "avoid by at least 20 miles any thunderstorm identified as severe or giving an intense radar echo."

**CAUTION** There are several atmospheric phenomena other than nearby thunderstorms which can cause isolated discharge points in the strike display mode. Clusters of two or more discharge points in the strike display mode however do indicate thunderstorm activity when they reappear after clearing the screen. Avoid the clusters and you'll avoid the thunderstorms. In the cell display mode, even a single discharge point may represent thunderstorm activity and should be avoided.

### Introduction

The examples in this chapter are designed to help you relate the patterns of + 's or X's on your Stormscope screen to the size and location of thunderstorms that may be near your aircraft.

A blue and white grid in the examples represents the airspace around your aircraft. (See figure 4-1.) Each

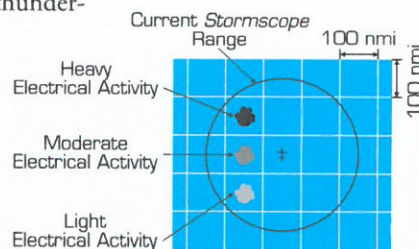


Figure 4-1. Airspace Diagram

square in the grid represents a 100 by 100 nmi area. A circle represents the area monitored by your WX-950. Areas of gray or black indicate thunderstorms. The darker the area, the greater the rate of electrical discharge activity.

The WX-950 detects electrical discharges and displays them as storm cells or as independent strikes. The examples in this chapter include WX-950 screens in both the cell display mode and the strike display mode.

### Radial Spread

In the strike display mode, it is common for a triangular-shaped stream of discharge points to appear between the aircraft symbol and a cluster of discharge points within the range of the WX-950. A similar stream of discharge points may appear radiating away from the aircraft symbol in the direction of possible thunderstorm activity beyond the range of the WX-950. These phenomena are examples of radial spread. Discharge points in radial spread do not necessarily indicate the exact location of atmospheric electrical discharges. To counteract radial spread, L-3 Avionics Systems applied its extensive research in lightning detection to develop enhanced lightning positioning algorithms. These algorithms (used only in the cell display mode) greatly reduce radial spread and improve the depiction of thunderstorms on the display.



## Typical Patterns

### Three Clusters within the 200 nmi Range Ring

Figure 4-2 shows the 360° weather view at the 200 nmi range. Using this knowledge, the outer range ring, and the azimuth markers, the three clusters of discharge points on the left-hand screen (cell display mode) can be interpreted as representing three thunderstorm cells at the following azimuth and range:

Cluster	Azimuth (clock position)	Range
1	11:00	180 nmi
2	4:00	75 nmi
3	4:00	180 nmi

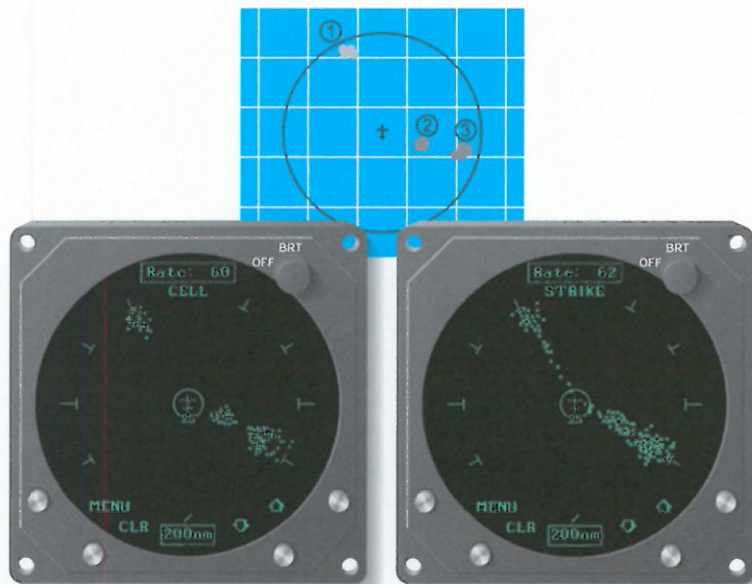


Figure 4-2. Three Clusters Within 200 nmi

Analysis of the right-hand screen (strike display mode) yields a similar, but less certain interpretation due to radial spread. The screen can also tell us about the relative amount of electrical discharge activity in thunderstorm cells. Clusters 2 and 3 have more discharge points than cluster 1 indicating greater electrical discharge activity. All three clusters how-

ever must be avoided because you can't necessarily determine the severity of thunderstorms based strictly on the number of discharge points. For example, in the western United States, a severe thunderstorm may only have a few electrical discharges.

When the range is changed to 100 nmi (figure 4-3), only cluster 2 remains visible. Clusters 1 and 3 are beyond the 100 nmi range and therefore no longer appear on the screen. (Clusters 1 and 3 would again be visible if the range were returned to 200 nmi.) Cluster 2 is now more defined and the discharge points are larger. The interpretation of cluster 2 remains the same: a moderately active thunderstorm at azimuth 4:00, range 75 nmi. Notice on the right-hand screen (strike display mode) that there is less radial spread than on the 200 nmi range. In general, radial spread is reduced on the shorter ranges.

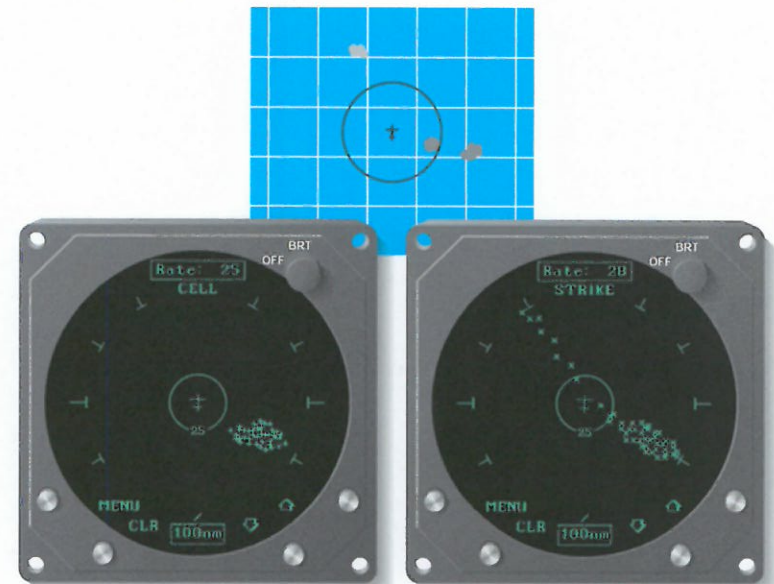


Figure 4-3. Range Changed to 100 nmi

### Two Clusters within the 200 nmi Range Ring

Figure 4-4 shows the screen in the 360° weather view at the 200 nmi range. Using this knowledge, the outer range ring, and the azimuth markers, the two clusters of discharge points on the screen can be interpreted as one thunderstorm cell at 5:30, about 150 nmi from the aircraft, and another cell at 1:00, about 100 nmi from the aircraft. The cluster at 1:00 has less radial spread (in the strike display mode) and fewer discharge points than the cluster at 5:30, indicating a lower rate of electrical activity. Both clusters must be avoided.

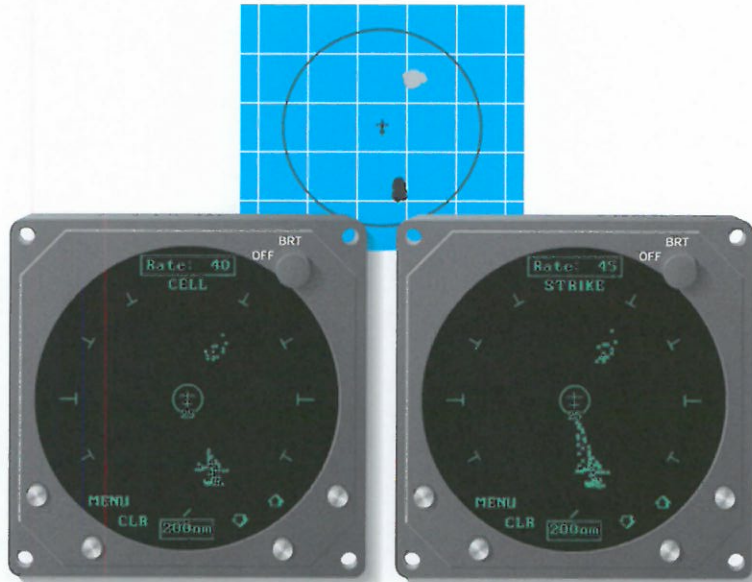


Figure 4-4. Two Clusters Within 200 nmi

### Mapping Headings Past Thunderstorms

Figures 4-5 through 4-8 and the following paragraphs show the progression of an aircraft past several thunderstorms.

#### Range Set at 200 nmi

Figure 4-5 shows the 360° weather view at the 200 nmi range. Two thunderstorms appear almost as one cluster of discharge points off the nose of the aircraft, centered 180 nmi away. A second cluster at 9:30 indicates a storm system containing three thunderstorms.

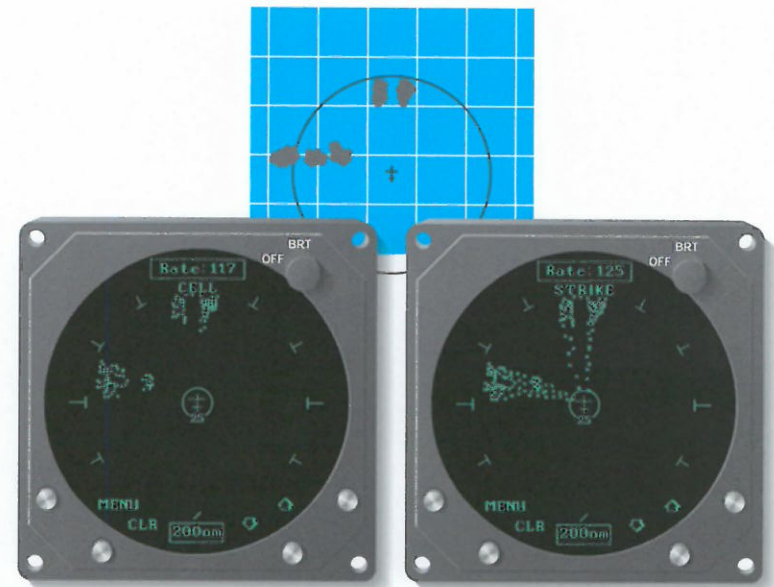


Figure 4-5. Range Set at 200 nmi



### Aircraft Progresses 100 nmi

Figure 4-6 shows that the aircraft has maintained its heading and progressed 100 nmi. The two thunderstorms off the nose of the aircraft appear to have expanded horizontally on the screen. This effect is normal anytime you get close to a storm. The line of thunderstorms previously at 9:30 now appears at 8:30.

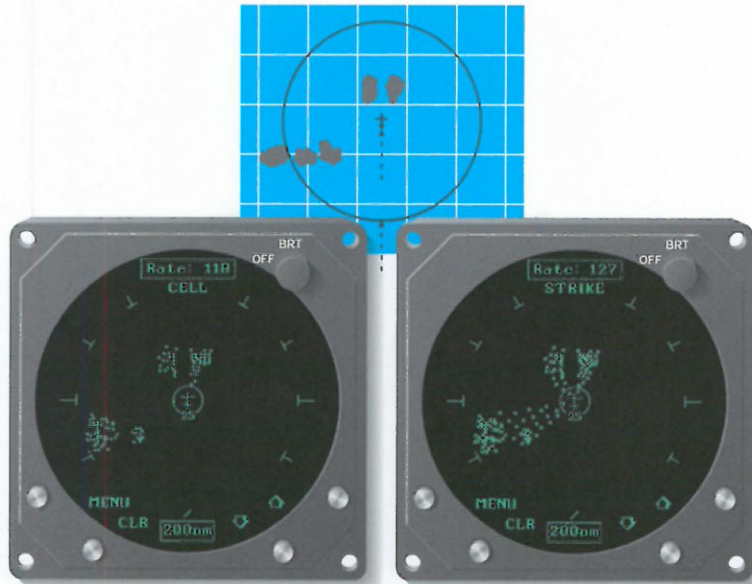


Figure 4-6. Aircraft Progresses 100 nmi

### Range Changes to 100 nmi

Figure 4-7 shows the screen a short time later in the 120° weather view at the 100 nmi range. The thunderstorms at 8:30 are not visible in this view but the thunderstorms off the nose of the aircraft appear in greater detail as two separate thunderstorms (at 11:30 and 12:15 centered 90 nmi from the aircraft).

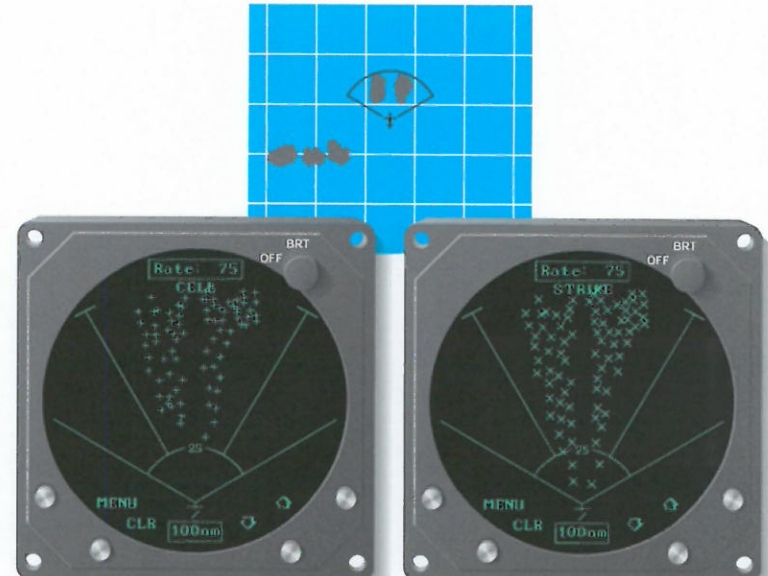


Figure 4-7. Range Changes to 100 nmi

### Aircraft Turns to Avoid Thunderstorms

Figure 4-8 shows the screen a short time later after the aircraft has turned to the right to avoid the thunderstorms. When connected to a compatible heading system, the WX-950 automatically rotates the discharge points to their correct position relative to the new heading.

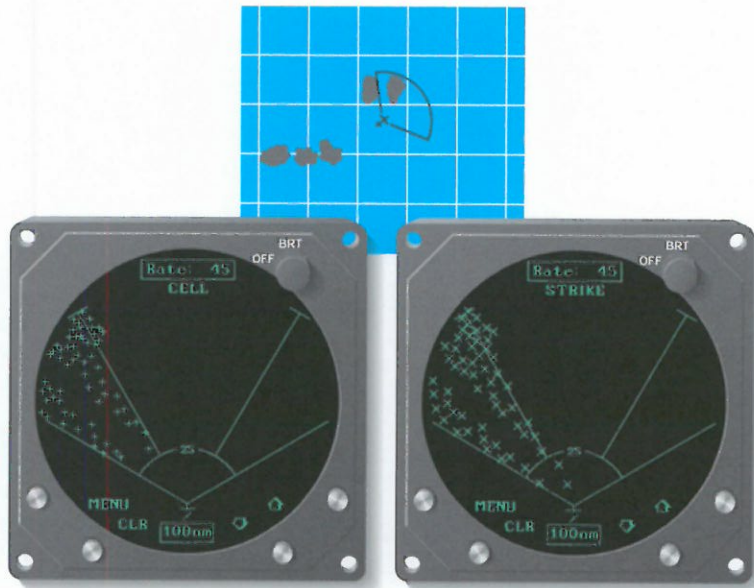


Figure 4-8. Aircraft Turns to Avoid Thunderstorms

## Special Patterns

### Randomly Scattered Discharge Points

Atmospheric instability associated with cumulus clouds, or developing or dissipating thunderstorms could cause randomly scattered discharge points as shown in figure 4-9. Random discharge points are more likely to appear in the strike display mode than in the cell display mode due to the cell display mode's clustering algorithm. If you observe random discharge points, continue to monitor the screen for developing clusters which indicate thunderstorm activity.

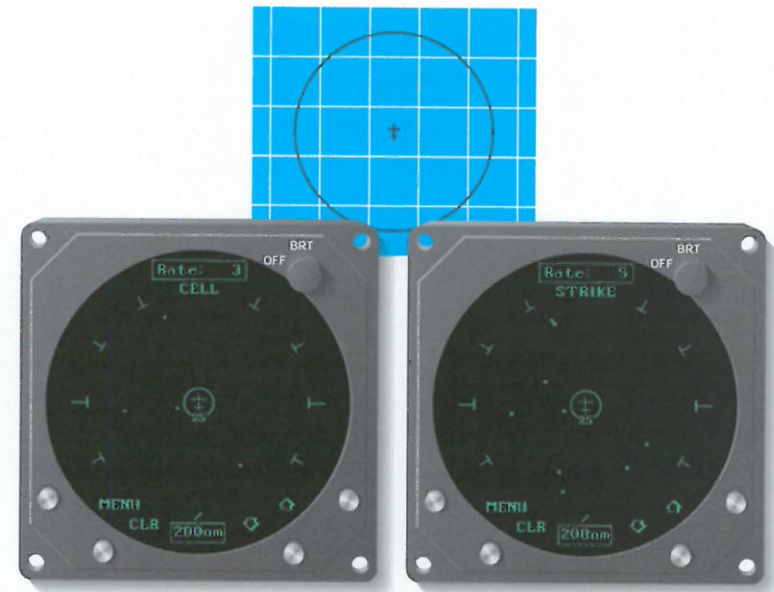


Figure 4-9. Randomly Scattered Discharge Points

### Cluster & Splattering Within 25 nmi

Figure 4-10 shows the 360° weather view at the 25 nmi range. One moderately active thunderstorm appears as a cluster of discharge points at 8:30 centered 14 nmi away with a splattering of discharge points throughout the 25 nmi range. Such splattering is due to electrical discharges within 3 to 5 nmi of the aircraft and indicates that the aircraft is too close to the thunderstorm.



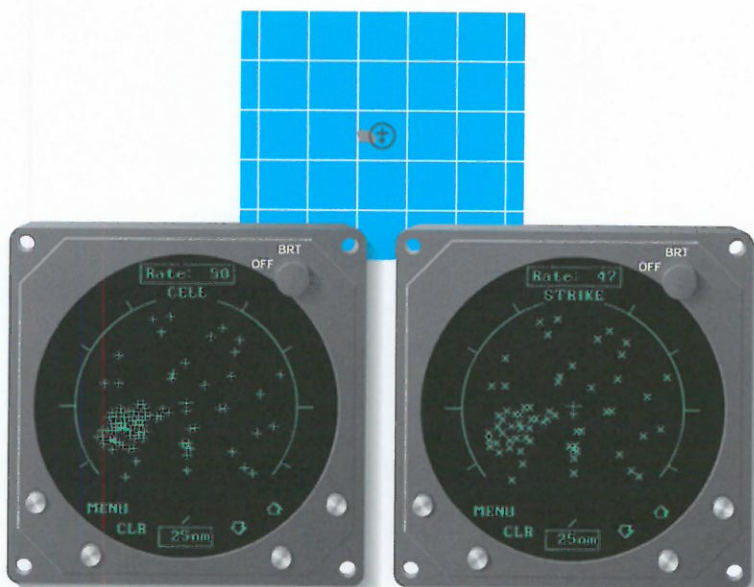


Figure 4-10. Cluster & Splattering Within 25 nmi

Continue to head away from the main cluster. While the main cluster should be your primary concern, you should also avoid any groups of discharge points within the 25 nmi range. Switch to the other ranges to ensure that there is no thunderstorm activity along your intended path.

You'll notice in figure 4-10 that the location of random, individual discharge points is about the same on both the cell and strike display modes. This is true because in the cell display mode, the WX-950 plots every electrical discharge detected within the 25 nmi range at the exact location detected unless the discharge is associated with a cluster of discharges, in which case the discharge point is clustered with the associated discharge points. You'll also notice that there are more points in the cluster of points at 8:30 in the cell display mode than there are in the strike display mode. This is due to the cell display mode's clustering algorithm "pulling in" individual discharge points associated with the cluster.

### Discharge Points Off Aircraft's Nose

Figure 4-11 shows the 360° weather view at the 200 nmi range. The discharge points ahead of the aircraft could be caused by a strong thunderstorm just beyond the 200 nmi range. Another cause might be electrical discharge signals arriving via atmospheric skip from a distant thunderstorm well beyond the WX-950 range. In either case, no immediate action is required.

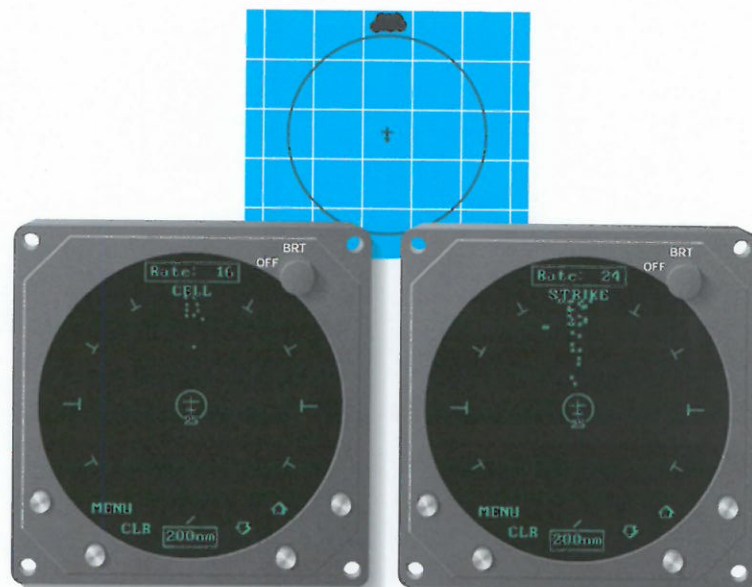


Figure 4-11. Discharge Points Off the Aircraft's Nose

### Line of Discharge Points While Taxiing

Passing over a cable beneath the taxiway can cause a line of discharge points across the screen as shown in figure 4-12. Similar concentrations of discharge points across the screen may appear while taxiing due to electrical signals from nearby equipment such as arc welders or subway rails. After passing the source of the interference, press the CLR button.

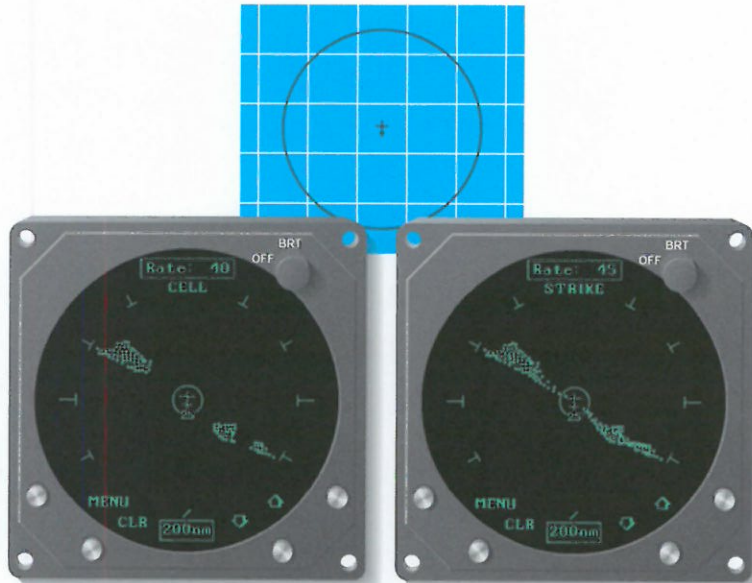


Figure 4-12. Line of Discharge Points While Taxiing

### Developing Cluster Within the 25 nmi Range Ring

Figure 4-13 shows a developing thunderstorm 12 nmi from the aircraft. If you see a screen such as this with a developing cluster within the 25 nmi range ring, you should change course to avoid the storm and continue to monitor the *Stormscope* screen.



Figure 4-13. Developing Cluster Within 25 nmi



## Chapter 5

# Specifications

Table 5-1. WX-950 System Specifications\*

**Part Number Definition:****System:**

830-10950-001 – Black Bezel, White Antenna  
 830-10950-002 – Gray Bezel, White Antenna  
 830-10950-003 – Black Bezel, Black Antenna  
 830-10950-004 – Gray Bezel, Black Antenna

**Display/Processor:**

805-10950-001 – Black Bezel  
 805-10950-002 – Gray Bezel

**Antenna (model NY-163):**

805-10930-001 – White  
 805-10930-002 – Black

**Features:**

Selectable weather ranges: 25, 50, 100, or 200 nautical miles  
 Selectable weather views: 120 or 360 degrees  
 Selectable display modes: Cell or Strike  
 Integral CRT display screen  
 Built-in self tests  
 Automatic heading stabilization  
 Discharge rate indicator  
 Microphone inhibit line  
 Integrity indicator  
 Power/brightness control knob  
 Four software-defined buttons

(Continues on next page)

\*Specifications subject to change without notice.

Table 5-1. WX-950 System Specifications\* (Continued)

**Size:**

Display/Processor (a standard 3ATI instrument):

3.37 in (8.56 cm) high

3.37 in (8.56 cm) wide

11.46 in (29.11 cm) deep, including connector backshell

**Antenna:**

1.00 in (2.54 cm) high

3.45 in (8.76 cm) wide

6.85 in (17.40 cm) long

**Weight:**

Display/Processor:

2.9 lb (1.3 kg)

Antenna:

0.84 lb (0.38 kg) without doubler plate

**Electrical Characteristics:**

Input voltage: 11 to 32 V dc

Current: 2.0 A  $\pm$ 0.5 A @ 12 V dc0.8 A  $\pm$ 0.25 A @ 28 V dc**Operating Temperature:**

Display/Processor:

-20 to +55 °C (-4 to +131 °F)

Antenna:

-55 to +70 °C (-67 to +158 °F)

**Operating Altitude:**

Display/Processor:

35,000 ft maximum

Antenna:

55,000 ft maximum

**Cooling:**

Display/Processor:

Internal fan

**Specification Compliance:**

Complies with FAA TSO C110a

Meets major international government requirements

\*Specifications subject to change without notice.

Notes

Notes



# Record of Important Information

## Dealer Information

Name \_\_\_\_\_

Address \_\_\_\_\_

City, State, Zip \_\_\_\_\_

Telephone \_\_\_\_\_

## Equipment Information

Date of Purchase \_\_\_\_\_

Installation Date \_\_\_\_\_

Display/Processor:

Model Number \_\_\_\_\_

Part Number \_\_\_\_\_

Serial Number \_\_\_\_\_

Mod Letter \_\_\_\_\_

Firmware Version \_\_\_\_\_

Antenna:

Model Number \_\_\_\_\_

Part Number \_\_\_\_\_

Serial Number \_\_\_\_\_

Mod Letter \_\_\_\_\_

### NOTE

*To ensure that a new or repaired WX-950 meets the TSO, meets foreign government certification requirements, and meets L-3 Avionics Systems performance standards, your WX-950 must be installed and tested by an L-3 Avionics Systems-authorized Stormscope dealer.*



**communications**

009-10951-001 (Rev. B, 6/08/04)

L-3 Communications Avionics Systems, Inc.  
5353 52nd Street, S.E.  
Grand Rapids, MI 49512 USA  
(800)253-9525  
[www.L-3com.com/as](http://www.L-3com.com/as)

**Stormscope® WX-950**